

Musical elements

Rhythm notation

Semibreve
4 crotchet beats



Minim
2 crotchet beats



Crotchet
1 beat



Quaver
1/2 of a crotchet beat



Semiquaver
1/4 of a crotchet beat



Time signatures are always found at the start of a piece of music.

The top number shows how many beats and the bottom number tells you the type of beat in each bar.

$\frac{4}{4}$ = 4 crotchet beats per bar



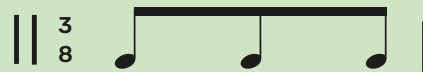
$\frac{3}{4}$ = 3 crotchet beats per bar



$\frac{6}{8}$ = 6 quaver beats per bar



$\frac{3}{8}$ = 3 quaver beats per bar



$\frac{3}{2}$ = 2 minim beats per bar



Dotted notes

A dot to the right of a note increases the duration of that note by half as much (50%).



A dotted semibreve = 4 + 2
6 crotchet beats



A dotted minim = 2 + 1
3 crotchet beats



A dotted crotchet = 1 + 1/2
1 and 1/2 crotchet beats



A dotted quaver = 1/2 + 1/4
3/4 of a crotchet beat

